



CATALOGUE NO. 8635.7

EMBARGOED UNTIL 11.30 A.M. 2 DECEMBER 1994

TOURIST ACCOMMODATION, NORTHERN TERRITORY, SEPTEMBER QUARTER 1994

MAIN FEATURES

SEPTEMBER QUARTER 1994
COMPARED WITH
SEPTEMBER QUARTER 1993

HOTELS, MOTELS AND GUEST HOUSES

- Rooms available increased by 0.5 per cent from 5,295 to 5,322 while bed spaces increased by 1.4 per cent from 15,247 to 15,468.
- Room nights occupied increased by 5.9 per cent from 328,246 to 347,454 overall with increases of 10.9 per cent for Alice Springs and 5.3 per cent for Darwin City. Tennant Creek was virtually unchanged and Katherine recorded a decrease of 11.6 per cent.
- The room occupancy rate overall rose from 67.4 per cent to 71.0 per cent, with Alice Springs and Darwin City recording increases of 6.9 and 2.8 percentage points, respectively, while Katherine and Tennant Creek recorded falls of 9.5 percentage points and 1.2 percentage points, respectively.
- Guest nights increased by 6.3 per cent from 577,549 to 614,170 and the bed occupancy rate increased from 41.2 per cent to 43.2 per cent.
- Guest arrivals at hotels, motels and guest houses increased by 8.1 per cent from 277,057 to 299,449 while the average length of stay remained at 2.1 days.
- Takings from accommodation increased by 10.5 per cent from \$26.6m to \$29.4m overall while average takings per room night occupied rose from \$81 to \$85. Accommodation takings for Alice Springs increased by 11.6 per cent, for Darwin City by 10.5 per cent and for Tennant Creek by 1.8 per cent while they were unchanged for Katherine. For the published areas, average takings per room night occupied ranged from \$91 for Darwin City to \$53 for Katherine.

HOLIDAY FLATS, UNITS AND HOUSES

- The number of units, etc. available for short-term letting increased by 25.2 per cent to 318 while unit nights occupied rose by 31.3 per cent from 18,535 to 24,344.
- The unit occupancy rate therefore increased from 79.3 per cent to 83.2 per cent.
- Unit lettings increased by 17.8 per cent from 5,329 to 6,280 and the average length of stay rose from 3.5 days to 3.9 days.
- Accommodation takings increased by 42.8 per cent from \$1.5m to \$2.1m with average takings per unit night occupied increasing from \$79 to \$86.

CARAVAN PARKS

- Caravan park capacity available increased by 2.9 per cent from 8,937 to 9,198 powered and unpowered sites and cabins, etc. while site nights occupied increased by 16.6 per cent from 314,003 to 366,163.
- The site occupancy rate consequently rose by 5.0 percentage points to 43.3 per cent.
- Accommodation takings rose by 14.4 per cent from \$4.1m to \$4.7m.

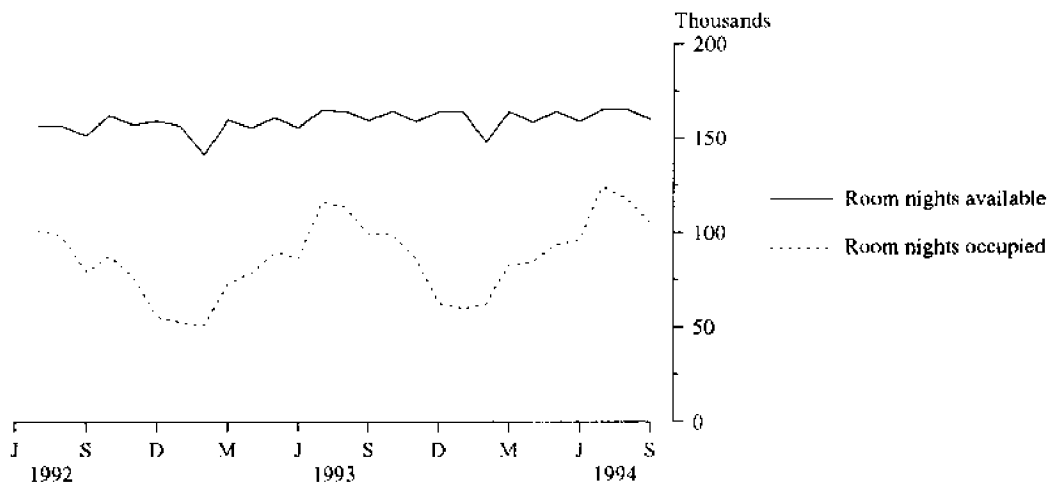
VISITOR HOSTELS

- Bed spaces available decreased by 7.6 per cent from 3,025 to 2,794 and guest nights sold decreased by 7.1 per cent from 169,023 to 157,099.
- The bed occupancy rate increased from 60.7 per cent to 61.8 per cent.
- Guest arrivals fell from 71,247 to 67,389 while the average length of stay fell from 2.4 days to 2.3 days.
- Accommodation takings were 1.0 per cent lower at \$2.0m and average takings per guest night sold increased from \$12 to \$13.

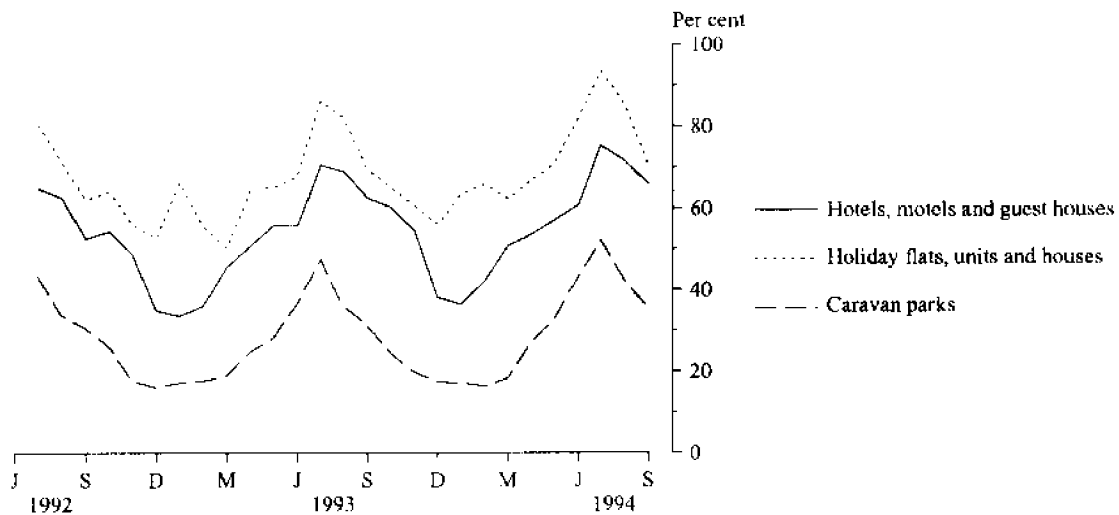
INQUIRIES

- *for further information about statistics in this publication and the availability of related unpublished statistics, contact Brian Hay on 008 077304 or any ABS office.*
- *for information about other ABS statistics and services, please contact Information Services on Darwin (089) 432 111 or any ABS office.*

**MONTHLY ROOM NIGHTS AVAILABLE AND OCCUPIED:
HOTELS, MOTELS AND GUEST HOUSES,
NORTHERN TERRITORY**



**MONTHLY OCCUPANCY RATES,
NORTHERN TERRITORY**



**MONTHLY TAKINGS FROM ACCOMMODATION,
NORTHERN TERRITORY**

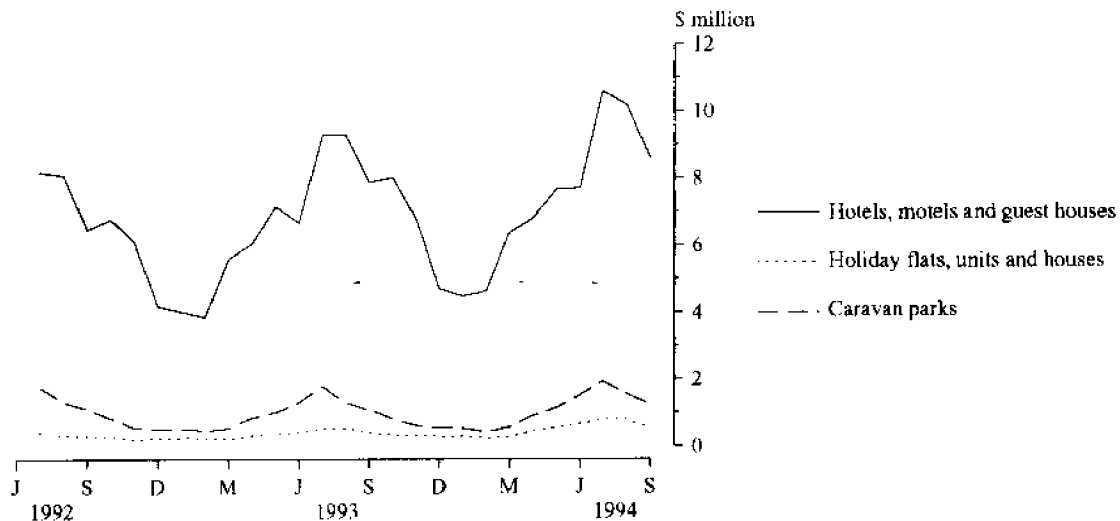


TABLE 1 — SUMMARY OF HOTELS, MOTELS AND GUEST HOUSES WITH FACILITIES, NORTHERN TERRITORY (a)

Particulars	Unit	Quarter ended				Year ended			
		June 1993	September 1993	December 1993	March 1994	June 1994	September 1994	September 1993	September 1994
LICENSED HOTELS WITH FACILITIES									
Establishments	No.	30	30	29	29	29	30
Guest rooms	No.	2,006	2,005	1,997	1,992	1,993	2,031
Bed spaces	No.	5,764	5,684	5,626	5,621	5,645	5,886
Employment (persons)	No.	1,755	1,887	1,801	1,786	1,881	2,066
Room nights occupied	No.	106,234	126,621	106,056	84,384	113,400	137,369	411,622	441,209
Room occupancy rate	per cent	58.2	68.6	57.7	47.1	62.5	73.5	56.3	60.3
Guest nights	No.	174,898	210,920	171,682	142,223	182,957	227,256	684,296	724,118
Bed occupancy rate	per cent	33.3	40.3	33.2	28.1	35.6	42.0	32.8	34.8
Guest arrivals	No.	87,816	108,674	88,014	82,527	87,978	114,318	334,841	372,837
Average length of stay	days	2.0	1.9	2.0	1.7	2.1	2.0	2.0	1.9
Takings from accommodation	\$'000	10,091	12,842	10,470	8,171	11,321	14,426	40,026	44,388
MOTELS AND GUEST HOUSES WITH FACILITIES									
Establishments	No.	60	63	63	64	64	63
Guest rooms	No.	3,159	3,290	3,285	3,287	3,283	3,291
Bed spaces	No.	9,352	9,563	9,483	9,478	9,578	9,582
Employment (persons)	No.	1,018	1,168	1,067	1,014	1,175	1,177
Room nights occupied	No.	147,981	201,625	141,124	120,258	161,234	210,085	565,232	632,701
Room occupancy rate	per cent	51.5	66.6	46.7	40.7	54.0	69.4	48.8	52.8
Guest nights	No.	265,074	366,629	237,837	199,981	285,112	386,914	1,008,394	1,109,844
Bed occupancy rate	per cent	31.1	41.7	27.3	23.4	32.7	43.9	29.6	31.9
Guest arrivals	No.	116,851	168,383	117,789	104,072	133,555	185,131	456,779	540,547
Average length of stay	days	2.3	2.2	2.0	1.9	2.1	2.1	2.2	2.1
Takings from accommodation	\$'000	9,760	13,738	9,027	7,340	10,872	14,951	36,912	42,189
TOTAL HOTELS, MOTELS AND GUEST HOUSES WITH FACILITIES									
Establishments	No.	90	93	92	93	93	93
Guest rooms	No.	5,165	5,295	5,282	5,279	5,276	5,322
Bed spaces	No.	15,116	15,247	15,109	15,099	15,223	15,468
Employment (persons)	No.	2,773	3,055	2,868	2,800	3,056	3,243
Room nights occupied	No.	254,215	328,246	247,180	204,642	274,634	347,454	976,854	1,073,910
Room occupancy rate	per cent	54.1	67.4	50.9	43.1	57.2	71.0	51.7	55.6
Guest nights	No.	439,972	577,549	409,519	342,204	468,069	614,170	1,692,690	1,833,962
Bed occupancy rate	per cent	32.0	41.2	29.5	25.2	33.8	43.2	30.8	33.0
Guest arrivals	No.	204,667	277,057	205,803	186,599	221,533	299,449	791,620	913,384
Average length of stay	days	2.1	2.1	2.0	1.8	2.1	2.1	2.1	2.0
Takings from accommodation	\$'000	19,851	26,579	19,496	15,510	22,193	29,377	76,938	86,577

(a) From December quarter 1993, establishments with fewer than 5 rooms have been formally excluded from the scope of this collection. See Explanatory Note 2 (page 14).

TABLE 2 — SUMMARY OF CARAVAN PARKS, NORTHERN TERRITORY

Particulars	Unit	Quarter ended				Year ended			
		June	September	December	March	June	September	September	September
		1993	1993	1993	1994	1994	1994	1993	1994
SHORT-TERM CARAVAN PARKS (a)									
Establishments	No.	57	57	55	55	56	63
Capacity									
On-site vans	No.	94	68	65	64	61	112
Other powered sites	No.	2,578	2,594	2,553	2,573	2,583	2,989
Unpowered sites	No.	3,631	3,200	3,127	3,088	3,067	3,452
Cabins, etc.	No.	157	142	147	151	162	183
<i>Total capacity</i>	<i>No.</i>	<i>6,460</i>	<i>6,004</i>	<i>5,892</i>	<i>5,876</i>	<i>5,873</i>	<i>6,736</i>
Sites occupied by long-term guests	No.	211	213	182	187	199	302
Other sites permanently reserved	No.	4	3	3	5	2	1
Employment (persons)	No.	249	256	206	213	243	269
Site nights occupied	No.	127,988	182,568	65,711	44,500	146,708	250,668	445,581	507,587
Site occupancy rate	per cent	22.1	33.2	12.1	8.4	27.5	40.5	18.6	22.8
Takings from accommodation	\$'000	1,953	2,725	949	666	2,188	3,498	6,251	7,301
LONG-TERM CARAVAN PARKS (a)									
Establishments	No.	24	25	25	25	25	20
Capacity									
On-site vans	No.	233	245	249	250	249	209
Other powered sites	No.	1,824	1,851	1,902	1,897	1,872	1,557
Unpowered sites	No.	722	759	785	784	771	622
Cabins, etc.	No.	73	78	72	73	76	74
<i>Total capacity</i>	<i>No.</i>	<i>2,852</i>	<i>2,933</i>	<i>3,008</i>	<i>3,004</i>	<i>2,968</i>	<i>2,462</i>
Sites occupied by long-term guests	No.	947	911	871	878	922	829
Other sites permanently reserved	No.	6	5	5	8	7	4
Employment (persons)	No.	80	94	89	86	92	69
Site nights occupied	No.	121,591	131,435	102,805	94,023	129,418	115,495	457,710	441,741
Site occupancy rate	per cent	46.9	48.7	37.1	34.8	47.9	51.0	43.5	42.3
Takings from accommodation	\$'000	1,209	1,414	1,019	899	1,385	1,238	4,489	4,541
TOTAL CARAVAN PARKS									
Establishments	No.	81	82	80	80	81	83
Capacity									
On-site vans	No.	327	313	314	314	310	321
Other powered sites	No.	4,402	4,445	4,455	4,470	4,455	4,546
Unpowered sites	No.	4,353	3,959	3,912	3,872	3,838	4,074
Cabins, etc.	No.	230	220	219	224	238	257
<i>Total capacity</i>	<i>No.</i>	<i>9,312</i>	<i>8,937</i>	<i>8,900</i>	<i>8,880</i>	<i>8,841</i>	<i>9,198</i>
Sites occupied by long-term guests	No.	1,158	1,124	1,053	1,065	1,121	1,131
Other sites permanently reserved	No.	10	8	8	13	9	5
Employment (persons)	No.	329	350	295	299	335	338
Site nights occupied	No.	249,579	314,003	168,516	138,523	276,126	366,163	903,291	949,328
Site occupancy rate	per cent	29.8	38.3	20.6	17.3	34.4	43.3	26.2	29.1
Takings from accommodation	\$'000	3,162	4,140	1,969	1,566	3,573	4,735	10,740	11,842

(a) A review of the occupancy of individual caravan parks has resulted in reclassification in September quarter 1994 of a net 5 parks from predominantly long-term to predominantly short-term.

TABLE 3 — SUMMARY OF HOLIDAY FLATS, UNITS AND HOUSES, NORTHERN TERRITORY

Particulars	Unit	Quarter ended				Year ended			
		June 1993	September 1993	December 1993	March 1994	June 1994	September 1994	September 1993	September 1994
Letting entities	No.	10	10	10	10	11	10
Flats, units and houses									
Single bedroom	No.	150	149	143	142	167	166
Multiple bedroom	No.	104	105	108	108	157	152
Total flats, units and houses	No.	254	254	251	250	324	318
Bed spaces	No.	1,020	983	1,027	1,022	1,267	1,224
Employment (persons) (a)	No.	52	54	63	50	82	70
Unit nights occupied	No.	15,226	18,535	13,704	14,355	21,597	24,344	59,737	74,000
Unit occupancy rate	per cent	65.9	79.3	60.5	63.8	73.2	83.2	65.1	71.2
Unit lettings	No.	3,767	5,329	3,765	3,962	5,143	6,280	14,498	19,150
Average length of stay	days	4.0	3.5	3.6	3.6	4.2	3.9	4.1	3.9
Takings from accommodation	\$'000	1,162	1,469	971	898	1,737	2,097	4,128	5,703

(a) Employment numbers exclude real estate agents and their employees.

TABLE 4 — SUMMARY OF VISITOR HOSTELS, NORTHERN TERRITORY

Particulars	Unit	Quarter ended				Year ended			
		June 1993	September 1993	December 1993	March 1994	June 1994	September 1994	September 1993	September 1994
Establishments	No.	36	40	39	39	36	35
Bed spaces	No.	3,164	3,025	2,994	2,944	2,776	2,794
Employment (persons)	No.	181	176	160	141	168	149
Guest nights	No.	136,079	169,023	116,606	100,413	130,561	157,099	531,337	504,679
Bed occupancy rate	per cent	47.3	60.7	42.3	38.1	52.2	61.8	47.1	48.4
Guest arrivals	No.	61,466	71,247	50,754	51,868	66,572	67,389	227,556	236,583
Average length of stay	days	2.2	2.4	2.3	1.9	2.0	2.3	2.3	2.1
Takings from accommodation	\$'000	1,605	1,983	1,436	1,279	1,662	1,964	6,381	6,341

TABLE 5 — HOTELS, MOTELS AND GUEST HOUSES WITH FACILITIES BY ESTABLISHMENT SIZE,
NORTHERN TERRITORY (*)

Particulars	Establishment size (number of rooms)						Northern Territory
	1-9	10-15	16-25	26-50	51-100	101+	
ESTABLISHMENTS, CAPACITY AND EMPLOYMENT							
<i>September quarter 1993</i>							
Establishments	7	8	18	20	27	13	93
Guest rooms	47	101	369	737	2,005	2,036	5,295
Bed spaces	128	291	1,159	2,184	5,509	5,976	15,247
Employment (persons)	45	84	180	416	1,099	1,231	3,055
<i>September quarter 1994</i>							
Establishments	6	8	21	19	25	14	93
Guest rooms	40	101	434	706	1,866	2,175	5,322
Bed spaces	115	292	1,353	2,083	5,146	6,479	15,468
Employment (persons)	35	101	203	472	968	1,464	3,243
ROOM NIGHTS OCCUPIED							
<i>September quarter 1993</i>	1,289	5,277	21,867	42,407	122,920	134,486	328,246
<i>1994</i>							
July	445	2,254	9,100	15,383	41,704	55,277	124,163
August	391	1,919	8,675	13,945	38,241	54,843	118,014
September	365	1,673	6,904	11,378	35,524	49,433	105,277
<i>September quarter 1994</i>	1,201	5,846	24,679	40,706	115,469	159,553	347,454
ROOM OCCUPANCY RATES (per cent)							
<i>September quarter 1993</i>	29.8	56.8	64.4	62.5	66.6	71.8	67.4
<i>1994</i>							
July	35.9	72.0	67.6	70.3	72.1	82.0	75.3
August	31.5	61.3	64.5	63.7	66.1	81.3	71.5
September	30.4	55.2	53.0	53.7	63.5	75.8	65.9
<i>September quarter 1994</i>	32.6	62.9	61.8	62.7	67.3	79.7	71.0
GUEST NIGHTS							
<i>September quarter 1993</i>	2,301	8,590	40,316	80,864	215,332	230,146	577,549
<i>1994</i>							
July	880	3,963	17,854	28,859	79,082	97,101	227,739
August	708	3,225	15,447	25,099	69,810	92,667	206,956
September	597	2,700	12,767	19,760	61,537	82,114	179,475
<i>September quarter 1994</i>	2,185	9,888	46,068	73,718	210,429	271,882	614,170
BED OCCUPANCY RATES (per cent)							
<i>September quarter 1993</i>	19.5	32.1	37.8	40.2	42.5	41.9	41.2
<i>1994</i>							
July	24.7	43.8	42.6	44.7	49.6	48.3	47.5
August	19.9	35.6	36.8	38.9	43.8	46.1	43.2
September	17.3	30.8	31.5	31.6	39.9	42.2	38.7
<i>September quarter 1994</i>	20.7	36.8	37.0	38.5	44.4	45.6	43.2
GUEST ARRIVALS							
<i>September quarter 1993</i>	2,120	6,489	17,142	37,570	93,620	120,116	277,057
<i>1994</i>							
July	778	2,600	7,135	14,894	36,693	46,821	108,921
August	664	2,145	6,412	12,575	34,508	46,798	103,102
September	540	1,766	4,854	10,111	29,943	40,212	87,426
<i>September quarter 1994</i>	1,982	6,511	18,401	37,580	101,144	133,831	299,449
AVERAGE LENGTH OF STAY (days)							
<i>September quarter 1993</i>	1.1	1.3	2.4	2.2	2.3	1.9	2.1
<i>September quarter 1994</i>	1.1	1.5	2.5	2.0	2.1	2.0	2.1
TAKINGS FROM ACCOMMODATION (\$'000)							
<i>September quarter 1993</i>	49	281	1,404	2,585	8,275	13,985	26,579
<i>1994</i>							
July	21	119	512	964	3,070	5,911	10,598
August	18	106	485	893	2,789	5,900	10,192
September	16	80	365	737	2,522	4,867	8,588
<i>September quarter 1994</i>	55	306	1,363	2,594	8,381	16,678	29,377

(a) From December quarter 1993, establishments with fewer than 5 rooms have been formally excluded from the scope of this collection. See Explanatory Note 2 (page 14).

TABLE 6A — HOTELS, MOTELS AND GUEST HOUSES WITH FACILITIES BY STAR GRADING BY STATISTICAL DIVISION, NORTHERN TERRITORY (a)

Particulars	Darwin (SD)				Northern Territory - Balance (SD)			
	Star grading			Total	Star grading			Total
	2	3, 4 and 5	Ungraded and 1		2	3, 4 and 5	Ungraded and 1	
ESTABLISHMENTS, CAPACITY AND EMPLOYMENT								
<i>September quarter 1993—</i>								
Establishments	9	8	9	26	23	22	22	67
Guest rooms	447	999	237	1,683	964	2,089	559	3,612
Bed spaces	1,315	2,512	693	4,520	2,677	6,481	1,569	10,727
Employment (persons)	302	1,010	91	1,403	398	986	268	1,652
<i>September quarter 1994—</i>								
Establishments	9	8	9	26	29	17	21	67
Guest rooms	480	999	237	1,716	1,350	1,810	446	3,606
Bed spaces	1,424	2,625	691	4,740	3,827	5,639	1,262	10,728
Employment (persons)	255	1,117	114	1,486	540	949	268	1,757
ROOM NIGHTS OCCUPIED								
<i>September quarter 1993</i>	36,495	77,133	18,330	131,958	47,687	124,778	23,823	196,288
<i>1994</i>								
July	13,534	28,315	6,746	48,595	25,238	42,743	7,587	75,568
August	13,214	28,997	6,343	48,554	22,481	40,479	6,500	69,460
September	10,664	25,603	5,505	41,772	20,816	37,461	5,228	63,505
<i>September quarter 1994</i>	37,412	82,915	18,594	138,921	68,535	120,683	19,315	208,533
ROOM OCCUPANCY RATES (per cent)								
<i>September quarter 1993</i>	88.7	83.9	84.1	85.2	53.8	64.9	46.3	59.1
<i>1994—</i>								
July	91.0	91.4	91.8	91.4	60.3	76.2	54.9	67.6
August	88.8	93.6	86.3	91.3	53.7	72.1	47.0	62.1
September	74.1	85.4	77.4	81.1	51.4	69.0	39.1	58.7
<i>September quarter 1994</i>	84.7	90.2	85.3	88.0	55.2	72.5	47.1	62.9
GUEST NIGHTS								
<i>September quarter 1993</i>	66,979	125,143	33,665	225,787	81,894	225,589	44,279	351,762
<i>1994—</i>								
July	27,112	45,364	11,699	84,175	47,527	79,612	16,425	143,564
August	22,968	46,172	10,870	80,010	39,453	72,445	15,048	126,946
September	19,379	38,898	9,659	67,936	35,847	66,450	9,242	111,539
<i>September quarter 1994</i>	69,459	130,434	32,228	232,121	122,827	218,507	40,715	382,049
BED OCCUPANCY RATES (per cent)								
<i>September quarter 1993</i>	55.4	54.2	52.8	54.3	33.3	37.8	30.7	35.6
<i>1994—</i>								
July	61.4	55.7	54.6	57.3	40.1	45.5	42.0	43.2
August	52.0	56.7	50.7	54.5	33.3	41.4	38.5	38.2
September	45.4	49.4	46.6	47.8	31.2	39.3	24.4	34.7
<i>September quarter 1994</i>	53.0	54.0	50.7	53.2	34.9	42.1	35.1	38.7
GUEST ARRIVALS								
<i>September quarter 1993</i>	20,615	47,227	11,470	79,312	46,629	120,948	30,168	197,745
<i>1994—</i>								
July	8,744	16,097	3,301	28,142	28,681	42,324	9,774	80,779
August	8,950	17,284	3,681	29,915	23,975	41,094	8,118	73,187
September	7,204	15,480	3,425	26,109	19,179	35,589	6,549	61,317
<i>September quarter 1994</i>	24,898	48,861	10,407	84,166	71,835	119,007	24,441	215,283
AVERAGE LENGTH OF STAY (days)								
<i>September quarter 1993</i>	3.2	2.6	2.9	2.8	1.8	1.9	1.5	1.8
<i>September quarter 1994</i>	2.8	2.7	3.1	2.8	1.7	1.8	1.7	1.8
TAKINGS FROM ACCOMMODATION (\$'000)								
<i>September quarter 1993</i>	2,474	7,977	975	11,425	2,506	11,074	1,574	15,154
<i>1994</i>								
July	1,092	2,996	359	4,447	1,564	4,210	377	6,150
August	1,037	3,163	334	4,534	1,326	3,948	384	5,658
September	776	2,584	285	3,646	1,234	3,415	294	4,942
<i>September quarter 1994</i>	2,905	8,743	979	12,627	4,123	11,573	1,054	16,750

(a) From December quarter 1993, establishments with fewer than 5 rooms have been formally excluded from the scope of this collection. See Explanatory Note 2 (page 14).

TABLE 6B — HOTELS, MOTELS AND GUEST HOUSES WITH FACILITIES BY STAR GRADING,
NORTHERN TERRITORY (a)

Particulars	Licensed hotels with facilities	Motels and guest houses	Star grading					Ungraded	Northern Territory
			1	2	3	4 and 5			
ESTABLISHMENTS, CAPACITY AND EMPLOYMENT									
<i>September quarter 1993—</i>									
Establishments	30	63	14	32	25	5	17	93	
Guest rooms	2,005	3,290	348	1,411	2,101	987	448	5,295	
Bed spaces	5,684	9,563	1,029	3,992	6,280	2,713	1,233	15,247	
Employment (persons)	1,887	1,168	138	700	925	1,071	221	3,055	
<i>September quarter 1994—</i>									
Establishments	30	63	15	38	20	5	15	93	
Guest rooms	2,031	3,291	370	1,830	1,822	987	313	5,322	
Bed spaces	5,886	9,582	1,081	5,251	5,494	2,770	872	15,468	
Employment (persons)	2,066	1,177	200	795	918	1,148	182	3,243	
ROOM NIGHTS OCCUPIED									
<i>September quarter 1993</i>	126,621	201,625	19,987	84,182	141,064	60,847	22,166	328,246	
<i>1994</i>									
July	47,890	76,273	7,813	38,772	47,166	23,892	6,520	124,163	
August	48,225	69,789	6,638	35,695	45,440	24,036	6,205	118,014	
September	41,254	64,023	5,706	31,480	42,820	20,244	5,027	105,277	
<i>September quarter 1994</i>	137,369	210,085	20,157	105,947	135,426	68,172	17,752	347,454	
ROOM OCCUPANCY RATES (per cent)									
<i>September quarter 1993</i>	68.6	66.6	62.4	64.8	73.0	67.0	53.8	67.4	
<i>1994</i>									
July	76.1	74.8	68.1	68.3	83.5	78.1	67.2	75.3	
August	76.6	68.4	57.9	62.9	80.5	78.6	63.9	71.5	
September	67.7	64.8	51.4	57.3	78.3	68.4	53.5	65.9	
<i>September quarter 1994</i>	73.5	69.4	59.2	62.9	80.8	75.1	61.6	71.0	
GUEST NIGHTS									
<i>September quarter 1993</i>	210,920	366,629	38,917	148,873	255,887	94,845	39,027	577,549	
<i>1994—</i>									
July	81,004	146,735	17,110	74,639	87,486	37,490	11,014	227,739	
August	80,146	126,810	14,896	62,421	81,525	37,092	11,022	206,956	
September	66,106	113,369	10,950	55,226	75,619	29,729	7,951	179,475	
<i>September quarter 1994</i>	227,256	386,914	42,956	192,286	244,630	104,311	29,987	614,170	
BED OCCUPANCY RATES (per cent)									
<i>September quarter 1993</i>	40.3	41.7	41.1	40.5	44.3	38.0	34.4	41.2	
<i>1994—</i>									
July	44.4	49.4	51.1	45.9	51.4	43.7	40.7	47.5	
August	43.9	42.7	44.5	38.3	47.9	43.2	40.8	43.2	
September	37.4	39.4	33.8	35.1	45.9	35.8	30.4	38.7	
<i>September quarter 1994</i>	42.0	43.9	43.2	39.8	48.4	40.9	37.4	43.2	
GUEST ARRIVALS									
<i>September quarter 1993</i>	108,674	168,383	20,142	67,244	115,745	52,430	21,496	277,057	
<i>1994—</i>									
July	40,013	68,908	7,578	37,425	37,801	20,620	5,497	108,921	
August	40,978	62,124	6,846	32,925	36,296	22,082	4,953	103,102	
September	33,327	54,099	5,579	26,383	33,526	17,543	4,395	87,426	
<i>September quarter 1994</i>	114,318	185,131	20,003	96,733	107,623	60,245	14,845	299,449	
AVERAGE LENGTH OF STAY (days)									
<i>September quarter 1993</i>	1.9	2.2	1.9	2.2	2.2	1.8	1.8	2.1	
<i>September quarter 1994</i>	2.0	2.1	2.1	2.0	2.3	1.7	2.0	2.1	
TAKINGS FROM ACCOMMODATION (\$'000)									
<i>September quarter 1993</i>	12,842	13,738	950	4,979	11,672	7,379	1,599	26,579	
<i>1994—</i>									
July	5,140	5,458	397	2,656	4,173	3,033	339	10,598	
August	5,168	5,024	376	2,363	4,026	3,085	342	10,192	
September	4,118	4,470	314	2,010	3,715	2,284	265	8,588	
<i>September quarter 1994</i>	14,426	14,951	1,087	7,028	11,914	8,402	946	29,377	

(a) From December quarter 1993, establishments with fewer than 5 rooms have been formally excluded from the scope of this collection. See Explanatory Note 2 (page 14).

TABLE 7 — HOTELS, MOTELS AND GUEST HOUSES WITH FACILITIES BY SELECTED LOCAL GOVERNMENT AREAS,
NORTHERN TERRITORY (a)

Particulars	Darwin City (b)	Alice Springs (T)	Katherine (T)	Tennant Creek (T)
ESTABLISHMENTS, CAPACITY AND EMPLOYMENT				
<i>September quarter 1993—</i>				
Establishments	26	22	8	4
Guest rooms	1,683	1,615	473	185
Bed spaces	4,520	4,849	1,323	489
Employment (persons)	1,403	537	187	78
<i>September quarter 1994</i>				
Establishments	26	22	8	4
Guest rooms	1,716	1,584	475	189
Bed spaces	4,740	4,805	1,325	495
Employment (persons)	1,486	603	231	49
ROOM NIGHTS OCCUPIED				
<i>September quarter 1993</i>	131,958	78,131	34,538	8,449
<i>1994—</i>				
July	48,595	29,232	11,292	3,527
August	48,554	27,416	10,505	2,792
September	41,772	29,995	8,734	2,101
<i>September quarter 1994</i>	138,921	86,643	30,531	8,420
ROOM OCCUPANCY RATES (per cent)				
<i>September quarter 1993</i>	85.2	52.6	79.4	49.6
<i>1994—</i>				
July	91.4	59.5	76.7	60.2
August	91.3	55.8	71.3	47.7
September	81.1	63.1	61.3	37.1
<i>September quarter 1994</i>	88.0	59.5	69.9	48.4
GUEST NIGHTS				
<i>September quarter 1993</i>	225,787	140,957	54,866	15,184
<i>1994—</i>				
July	84,175	54,590	20,151	6,934
August	80,010	46,333	18,507	4,977
September	67,936	50,502	15,020	3,714
<i>September quarter 1994</i>	232,121	151,425	53,678	15,625
BED OCCUPANCY RATES (per cent)				
<i>September quarter 1993</i>	54.3	31.6	45.1	33.8
<i>1994—</i>				
July	57.3	36.6	49.1	45.2
August	54.5	31.1	45.1	32.4
September	47.8	35.0	37.8	25.0
<i>September quarter 1994</i>	53.2	34.3	44.0	34.3
GUEST ARRIVALS				
<i>September quarter 1993</i>	79,312	64,910	26,886	12,969
<i>1994—</i>				
July	28,142	25,554	12,334	6,183
August	29,915	24,723	11,405	4,688
September	26,109	24,762	8,727	3,198
<i>September quarter 1994</i>	84,166	75,039	32,466	14,069
AVERAGE LENGTH OF STAY (days)				
<i>September quarter 1993</i>	2.8	2.2	2.0	1.2
<i>September quarter 1994</i>	2.8	2.0	1.7	1.1
TAKINGS FROM ACCOMMODATION (\$'000)				
<i>September quarter 1993</i>	11,425	5,323	1,621	494
<i>1994—</i>				
July	4,447	2,021	623	212
August	4,534	1,888	556	168
September	3,646	2,033	442	124
<i>September quarter 1994</i>	12,627	5,943	1,621	503

(a) From December quarter 1993, establishments with fewer than 5 rooms have been formally excluded from the scope of this collection. See Explanatory Note 2 (page 14).
(b) As there are no in-scope establishments outside the Darwin City boundaries, data for Darwin City are the same as for the Darwin Statistical Division.

TABLE 8 — HOLIDAY FLATS AND UNITS BY STATISTICAL DIVISION, NORTHERN TERRITORY

<i>Particulars</i>	<i>Darwin (SD)</i>	<i>Northern Territory - Balance (SD)</i>	<i>Northern Territory</i>
LETTING ENTITIES, CAPACITY AND EMPLOYMENT			
<i>September quarter 1993—</i>			
Letting entities	6	4	10
Flats, units and houses			
Single bedroom	79	70	149
Multiple bedroom	91	14	105
<i>Total flats, units and houses</i>	<i>170</i>	<i>84</i>	<i>254</i>
Bed spaces	654	329	983
Employment (persons) (a)	43	11	54
<i>September quarter 1994—</i>			
Letting entities	7	3	10
Flats, units and houses			
Single bedroom	n.p.	n.p.	166
Multiple bedroom	n.p.	n.p.	152
<i>Total flats, units and houses</i>	<i>n.p.</i>	<i>n.p.</i>	<i>318</i>
Bed spaces	n.p.	n.p.	1,224
Employment (persons) (a)	n.p.	n.p.	70
UNIT NIGHTS OCCUPIED			
<i>September quarter 1993</i>	<i>12,941</i>	<i>5,594</i>	<i>18,535</i>
<i>1994—</i>			
July	n.p.	n.p.	9,209
August	n.p.	n.p.	8,405
September	n.p.	n.p.	6,730
<i>September quarter 1994</i>	<i>n.p.</i>	<i>n.p.</i>	<i>24,344</i>
UNIT OCCUPANCY RATES (per cent)			
<i>September quarter 1993</i>	<i>82.7</i>	<i>72.4</i>	<i>79.3</i>
<i>1994—</i>			
July	n.p.	n.p.	93.4
August	n.p.	n.p.	85.3
September	n.p.	n.p.	70.5
<i>September quarter 1994</i>	<i>n.p.</i>	<i>n.p.</i>	<i>83.2</i>
UNIT LETTINGS			
<i>September quarter 1993</i>	<i>2,658</i>	<i>2,671</i>	<i>5,329</i>
<i>1994—</i>			
July	n.p.	n.p.	2,292
August	n.p.	n.p.	2,107
September	n.p.	n.p.	1,881
<i>September quarter 1994</i>	<i>n.p.</i>	<i>n.p.</i>	<i>6,280</i>
AVERAGE LENGTH OF STAY (days)			
<i>September quarter 1993</i>	<i>4.9</i>	<i>2.1</i>	<i>3.5</i>
<i>1994—</i>			
July	n.p.	n.p.	4.0
August	n.p.	n.p.	4.0
September	n.p.	n.p.	3.6
<i>September quarter 1994</i>	<i>n.p.</i>	<i>n.p.</i>	<i>3.9</i>
TAKINGS FROM ACCOMMODATION (\$'000)			
<i>September quarter 1993</i>	<i>1,090</i>	<i>380</i>	<i>1,469</i>
<i>1994—</i>			
July	n.p.	n.p.	801
August	n.p.	n.p.	787
September	n.p.	n.p.	508
<i>September quarter 1994</i>	<i>n.p.</i>	<i>n.p.</i>	<i>2,097</i>

(a) Employment numbers exclude real estate agents and their employees.

TABLE 9—CARAVAN PARKS BY STATISTICAL AREA AND TYPE, NORTHERN TERRITORY

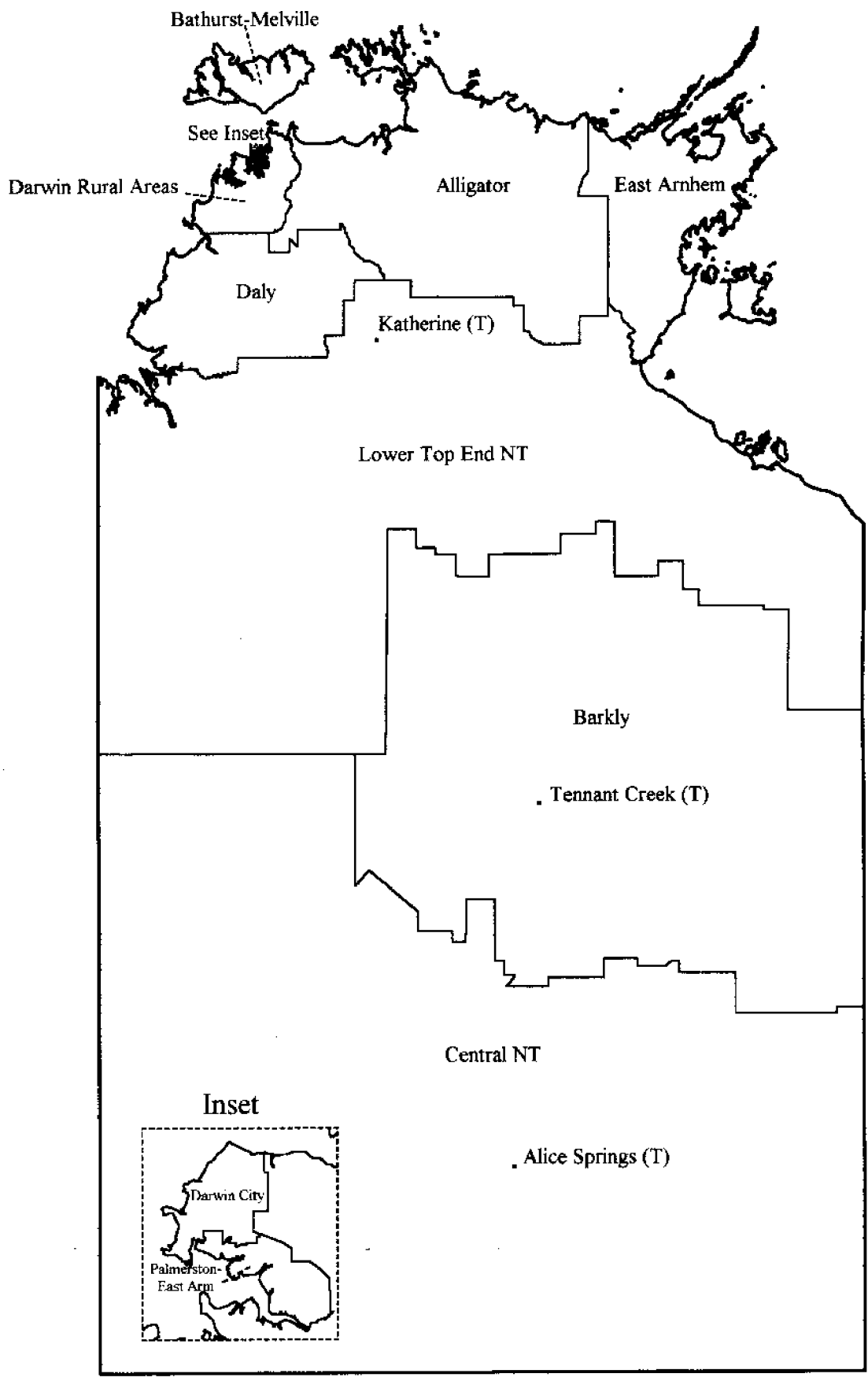
Particulars	Darwin (SD) and Alligator (SSD)	Darwin Rural Areas and Daly (SSDs)	Lower Top End Northern Territory (SSD)	Barkly (SSD)	Central Northern Territory (SSD)	Northern Territory		Total
						Short-term parks (a)	Long-term parks (a)	
ESTABLISHMENTS, CAPACITY AND EMPLOYMENT								
September quarter 1993— Establishments	10	19	23	10	20	57	25	82
Capacity								
On-site vans	27	160	12	22	92	68	245	313
Other powered sites	1,243	767	874	332	1,229	2,594	1,851	4,445
Unpowered sites	418	517	885	392	1,747	3,200	759	3,959
Cabins, flats, etc.	31	34	45	28	82	142	78	220
Total capacity	1,719	1,478	1,816	774	3,150	6,004	2,933	8,937
Sites occupied by long-term guests	379	288	100	25	332	213	911	1,124
Other sites permanently reserved	—	2	—	2	4	3	5	8
Employment (persons)	41	62	105	46	96	256	94	350
September quarter 1994— Establishments	10	21	23	10	19	63	20	83
Capacity								
On-site vans	27	162	13	21	98	112	209	321
Other powered sites	1,247	813	911	350	1,225	2,989	1,557	4,546
Unpowered sites	568	503	880	391	1,732	3,452	622	4,074
Cabins, flats, etc.	41	63	38	28	87	183	74	257
Total capacity	1,883	1,541	1,842	790	3,142	6,736	2,462	9,198
Sites occupied by long-term guests	361	325	93	21	331	302	829	1,131
Other sites permanently reserved	—	3	—	—	2	1	4	5
Employment (persons)	52	65	107	38	76	269	69	338
SITE NIGHTS OCCUPIED								
September quarter 1993	81,413	47,956	57,462	17,806	109,366	182,568	131,435	314,003
1994—								
July	39,353	23,644	28,178	9,755	47,540	104,676	43,794	148,470
August	33,422	19,263	22,097	7,598	37,546	81,098	38,828	119,926
September	23,436	15,112	14,672	5,112	39,435	64,894	32,873	97,767
September quarter 1994	96,211	58,019	64,947	22,465	124,521	250,668	115,495	366,163
SITE OCCUPANCY RATES (per cent)								
September quarter 1993	51.5	35.8	34.4	25.0	37.7	33.2	48.7	38.3
1994—								
July	67.4	49.5	49.3	39.8	48.8	50.1	57.4	52.1
August	57.3	40.3	38.7	31.0	38.5	38.8	50.9	42.1
September	41.5	33.1	26.6	21.6	41.8	32.2	44.5	35.5
September quarter 1994	55.5	41.1	38.3	30.9	43.1	40.5	51.0	43.3
TAKINGS FROM ACCOMMODATION (\$'000)								
September quarter 1993	794	559	737	269	1,781	2,725	1,414	4,140
1994—								
July	369	307	380	143	744	1,458	486	1,944
August	308	237	295	112	598	1,143	408	1,551
September	212	178	178	73	599	896	344	1,240
September quarter 1994	890	723	852	328	1,942	3,498	1,238	4,735

(a) A review of the occupancy of individual caravan parks has resulted in reclassification in September quarter 1994 of a net 5 parks from predominantly long-term to predominantly short-term.

TABLE 10 — VISITOR HOSTELS BY STATISTICAL DIVISION, NORTHERN TERRITORY

<i>Particulars</i>	<i>Darwin (SD)</i>	<i>Northern Territory - Balance (SD)</i>	<i>Northern Territory</i>
ESTABLISHMENTS, CAPACITY AND EMPLOYMENT			
<i>September quarter 1993—</i>			
Establishments	15	25	40
Bed spaces	1,317	1,708	3,025
Employment (persons)	64	112	176
<i>September quarter 1994—</i>			
Establishments	12	23	35
Bed spaces	1,046	1,748	2,794
Employment (persons)	61	88	149
GUEST NIGHTS			
<i>September quarter 1993</i>	<i>82,929</i>	<i>86,094</i>	<i>169,023</i>
<i>1994—</i>			
July	24,492	32,998	57,490
August	23,585	30,233	53,818
September	20,711	25,080	45,791
<i>September quarter 1994</i>	<i>68,788</i>	<i>88,311</i>	<i>157,099</i>
BED OCCUPANCY RATES (per cent)			
<i>September quarter 1993</i>	<i>68.4</i>	<i>54.8</i>	<i>60.7</i>
<i>1994—</i>			
July	75.5	60.9	66.4
August	72.7	55.8	62.1
September	66.0	50.4	56.4
<i>September quarter 1994</i>	<i>71.5</i>	<i>55.8</i>	<i>61.8</i>
GUEST ARRIVALS			
<i>September quarter 1993</i>	<i>25,004</i>	<i>46,243</i>	<i>71,247</i>
<i>1994—</i>			
July	7,478	16,425	23,903
August	7,423	15,725	23,148
September	7,130	13,208	20,338
<i>September quarter 1994</i>	<i>22,031</i>	<i>45,358</i>	<i>67,389</i>
AVERAGE LENGTH OF STAY (days)			
<i>September quarter 1993</i>	<i>3.3</i>	<i>1.9</i>	<i>2.4</i>
<i>1994—</i>			
July	3.3	2.0	2.4
August	3.2	1.9	2.3
September	2.9	1.9	2.3
<i>September quarter 1994</i>	<i>3.1</i>	<i>1.9</i>	<i>2.3</i>
TAKINGS FROM ACCOMMODATION (\$'000)			
<i>September quarter 1993</i>	<i>914</i>	<i>1,069</i>	<i>1,983</i>
<i>1994—</i>			
July	287	432	719
August	281	385	666
September	246	333	579
<i>September quarter 1994</i>	<i>814</i>	<i>1,150</i>	<i>1,964</i>

Northern Territory Statistical Subdivisions



EXPLANATORY NOTES

INTRODUCTION

1 This publication contains data for Northern Territory from a quarterly survey of tourist accommodation establishments. The period covered by the latest survey is the 3 months ended 30 September 1994.

SCOPE

2 Tourist accommodation establishments currently included in the survey comprise two groups:

- Establishments which provide predominantly short-term accommodation (i.e. for periods of less than 2 months) to the general public. These include:

Hotels, motels and guest houses, with facilities being hotels licensed to operate a public bar and motels, private hotels and guest houses all of which provide a bath (or shower) and toilet in most guest rooms and have breakfast available for guests.

NOTE: From December quarter 1993, hotel, motel and guest house establishments with fewer than five rooms have been formally excluded from the scope of this statistical collection. This change in scope resulted in the exclusion of one establishment which in the September quarter 1993 Survey aggregates for Northern Territory represented 1.1 per cent of hotel, motel and guest house establishments but accounted for a negligible proportion of accommodation capacity, occupancy and takings.

Holiday flats, units and houses (excluding establishments predominantly operated on a time share basis) which are operated by owners or managers who have sole letting rights to at least five flats, units or houses or by real estate agents for short-term letting. They are mainly self-contained in terms of cooking, bath (or shower) and toilet facilities and do not have breakfast available for guests. Data for holiday flats, units and houses include short-term owner occupation as well as paying guest occupation.

Visitor hostels which provide accommodation to visitors on a bed basis (rather than by the room). This category does not include establishments providing charity type accommodation (e.g. Salvation Army hostels) nor hotels, motels and guest houses without in-room facilities which provide accommodation on a per room basis.

- *Caravan parks* which provide either predominantly short-term (i.e. for periods of less than 2 months) or predominantly long-term (i.e. for periods of 2 months or more) accommodation to the general public and which provide powered sites for caravans and toilet, shower and laundry facilities for guests.

3 Data collected and published for each type of establishment (other than holiday flats, units and houses) include both long-term and short-term guests at these establishments.

4 Establishments which provide more than one type of accommodation (e.g. a motel with attached caravan park) are treated as two or more separate establishments. However, self-contained units, flats, cabins, etc. attached to hotels, motels or to caravan parks are included in the capacity for those establishments and not treated as separate holiday flat, unit or house establishments.

DEFINITIONS

5 *Number of establishments.* For hotels, motels and guest houses, caravan parks and visitor hostels, the number of establishments within the scope of the survey which operated for any part of the survey period, or which closed temporarily for the quarter for seasonal reasons.

6 *Number of letting entities.* For holiday flats, units and houses, the number of owners, managers or real estate agents within the scope of the survey who operated for any part of the survey period.

7 *Capacity in terms of Guest rooms, Bed spaces, Holiday units or Caravan park sites, etc.* is the maximum number available to accommodate paying guests during the survey period. Capacity closed temporarily for seasonal reasons is included.

8 *Bed spaces.* Three-quarter beds are counted as one bed space; double beds as two bed spaces. Cots are excluded.

9 *Total caravan park capacity* comprises *On-site vans, Other powered sites, Unpowered sites and Cabins, etc.*

EXPLANATORY NOTES—continued

DEFINITIONS—continued

10 *Room nights available.* The number of guest rooms available multiplied by the number of days for which they were available during the survey period. Includes operating periods only for establishments closing (other than for seasonal reasons) or opening during the survey period.

11 Occupancy in terms of *Room nights*, *Unit nights* or *Site nights occupied* refers to the total number of nights each guest room, holiday unit or caravan park site, etc. was occupied during the survey period.

NOTE: From September quarter 1992, caravan park sites, etc. permanently reserved for 2 months or more at the end of the survey period but only casually occupied by their tenants have been recorded continuously as *Site nights occupied* irrespective of whether the tenants of individual sites were in residence on any particular night. (See also paragraph 14 below). Previously, usage of these sites was recorded as *Site nights occupied* only when their tenants were in the park.

12 Occupancy in terms of *Guest nights* refers to the total number of nights each paying guest stayed during the survey period.

13 *Sites occupied by long-term guests.* The total number of sites, etc. occupied at the end of the survey period by guests who have stayed continuously for 2 months or more.

14 *Other sites permanently reserved.* The total number of powered and unpowered sites, on-site vans and cabins, etc. continuously let for 2 months or more by the end of the survey period to tenants who occupy the sites only on a casual or sporadic basis. Separate data for this item are available only from September quarter 1992.

15 *Occupancy rates* represent occupancy expressed as a percentage of total capacity available during the survey period e.g.

$$\text{Room occupancy rate (\%)} \text{ for the period} = \frac{\text{Room nights occupied}}{(\text{Guest rooms}) \times (\text{No. of days in the period})} \times 100$$

providing that, for establishments closing (other than for seasonal reasons) or opening during the period, the denominator of the above expression includes only operating periods.

16 *Guest arrivals.* The total number of paying guests counted only on the first night they stayed at the accommodation establishment.

17 *Unit lettings.* The total number of times a holiday flat, unit or house was occupied by a new tenant, counted only on the first night it was occupied by the new tenant.

18 *Average length of stay* is expressed in number of days and calculated:

- for hotels, motels and guest houses and for visitor hostels, by dividing *Guest nights* by *Guest arrivals* and
- for holiday flats, units and houses, by dividing *Unit nights occupied* by *Unit lettings*.

19 *Takings from accommodation.* Revenue received from the provision of accommodation. Takings from meals are excluded. Takings from accommodation for each month generally represent the takings received during that month. Where payments are received in advance of, or after, the provision of accommodation to guests, the monthly figure for takings from accommodation may not necessarily bear a direct relationship to the number of guests accommodated during the month. Rental and storage fees paid to caravan parks for the keeping of private vans in parks are included in the takings of the month they are received.

20 *Star grading.* The grading of hotels and motels with facilities based on the classification system used by members of the Australian Automobile Association (AAA). The gradings are allocated according to a points system based on the amenities and facilities available to guests. Details of the grading scheme are contained in the RACV-RAASA members' publication *Accommodation Australia*, or the individual tour guides produced by members of the AAA. For the purpose of classifying establishments to a star grading in this publication, 'half' star gradings are ignored (e.g. a two and a half star grading has been shown as two star).

EXPLANATORY NOTES—*continued*

DEFINITIONS—*continued*

21 *Employment.* The number of persons working at accommodation establishments at the end of the survey period (including working proprietors and those working on other than accommodation activities).

AUSTRALIAN STANDARD
GEOGRAPHICAL
CLASSIFICATION

22. Statistics presented in this publication have been classified according to the Australian Standard Geographical Classification (ASGC), Edition 2.4. This classification incorporates a number of hierarchic structures of geographic areas. The appropriate spatial units of the main structure of the ASGC used in this publication are:

Statistical Local Areas (SLAs) which are legal Local Government Areas or equivalent spatial units which serve as the smallest type of spatial unit considered appropriate for the presentation of statistics which add, without gaps or overlaps, to;

Statistical Subdivisions (SSDs) which in turn represent another, higher hierarchic level and add, without gaps or overlaps, to;

Statistical Divisions (SDs) which in turn add, without gaps or overlaps, to;

The Northern Territory.

For more detailed information, refer to the ASGC (1216.0).

The Northern Territory comprises three SDs, i.e. Darwin, Northern Territory Balance, and Offshore Areas and Migratory. Only the first two of these units are appropriate for the presentation of statistics in this publication and together add to the Northern Territory.

UNPUBLISHED STATISTICS

23 The ABS may make available on request certain unpublished tourist accommodation statistics. A charge may be made for this information.

RELATED PUBLICATIONS

24 Publications for Australia, and each State and Territory, are released by the respective offices of the ABS. Tourist accommodation statistics for past quarters are available on request.

25 Other ABS publications which may be of interest include:

Directory of Tourism Statistics, (1130.0) (irregular)

Overseas Arrivals and Departures, Australia (3401.0) (monthly)

Tourism Indicators Australia (8634.0) (quarterly)

Tourist Accommodation, Australia (8635.0) (quarterly)

26 Current publications produced by the ABS are listed in the *Catalogue of Publications and Products* (1101.0). The ABS also issues the *Publications Advice* (1105.0) on Tuesdays and Fridays which lists publications to be released in the next few days. Both the *Catalogue* and *Publications Advice* are available from any ABS office.

SYMBOLS AND
OTHER USAGES

n.a. not available
.. not applicable
— nil or rounded to zero
(T) Town

27 Where figures have been rounded, discrepancies may occur between totals and sums of the component items.

81 Smith Street
DARWIN NT 0800
2 December 1994

BOB HARRISON
Statistician, Northern Territory

© Commonwealth of Australia 1994

Recommended retail price: \$15.00



2863570009945
ISSN 0157-1354
